



SILVA

GIGIRI



WHERE STILLNESS IS OWNED

A new vision of calm rises within Gigiri, inside the UN Blue Zone, long regarded as Kenya's most secure and internationally connected enclave.

Private ownership. Five-star living. Global standards.

Silva Gigiri is an internationally branded residential sanctuary, where architecture, nature, and hospitality converge with quiet precision. Backed by a global hospitality brand, it delivers not only a home but service, security, and long-term value. Here, modern life softens.

Time moves differently. And stillness becomes something you own.



CRAFTED STILLNESS

Silva Gigiri is shaped by the belief that true grandeur is not excess, but harmony between space and self, material, meaning, sound and silence, Living and service.

The development presents a refined collection of residences, from Studios to **One, Two and Three Bedroom homes**, crowned by three exclusive Penthouses designed for those who value privacy, elegance, and global standards of living. Each supported by international standards of hospitality and management.

This is a home for individuals who have moved beyond the noise of achievement and now seek clarity, purpose, and peace. A place where living becomes intentional.





IN THE HUSH BETWEEN TREES & SKY

At Silva Gigiri, stillness is not the absence of sound. It is a presence. A presence that settles into your breath, your movement, your day. Morning light filters through the canopy. Evenings unfold quietly above the treetops. In the hush between trees and sky, you are invited to return to yourself to pause, to reflect, and to rediscover the quiet joy of living deeply and unhurriedly.

A sanctuary where the mind clears, the heart rests, and the spirit finds space again. Beyond the calm, there is a deeper assurance a home supported by global systems, intelligent design, and seamless service.

EMBRACE THE STILLNESS

Silva amenities are thoughtfully composed to restore balance and invite pause, each space is designed to gently draw you inward, toward calm, clarity and renewal.



Ample Parking



24/7 Concierge



High Speed Internet



Wellness Spa



Heated Swimming Pool



Laundry Facilities



High Speed Lifts



300m Jogging Track



Open Green Spaces



Fire Protection



Restaurant



Gym

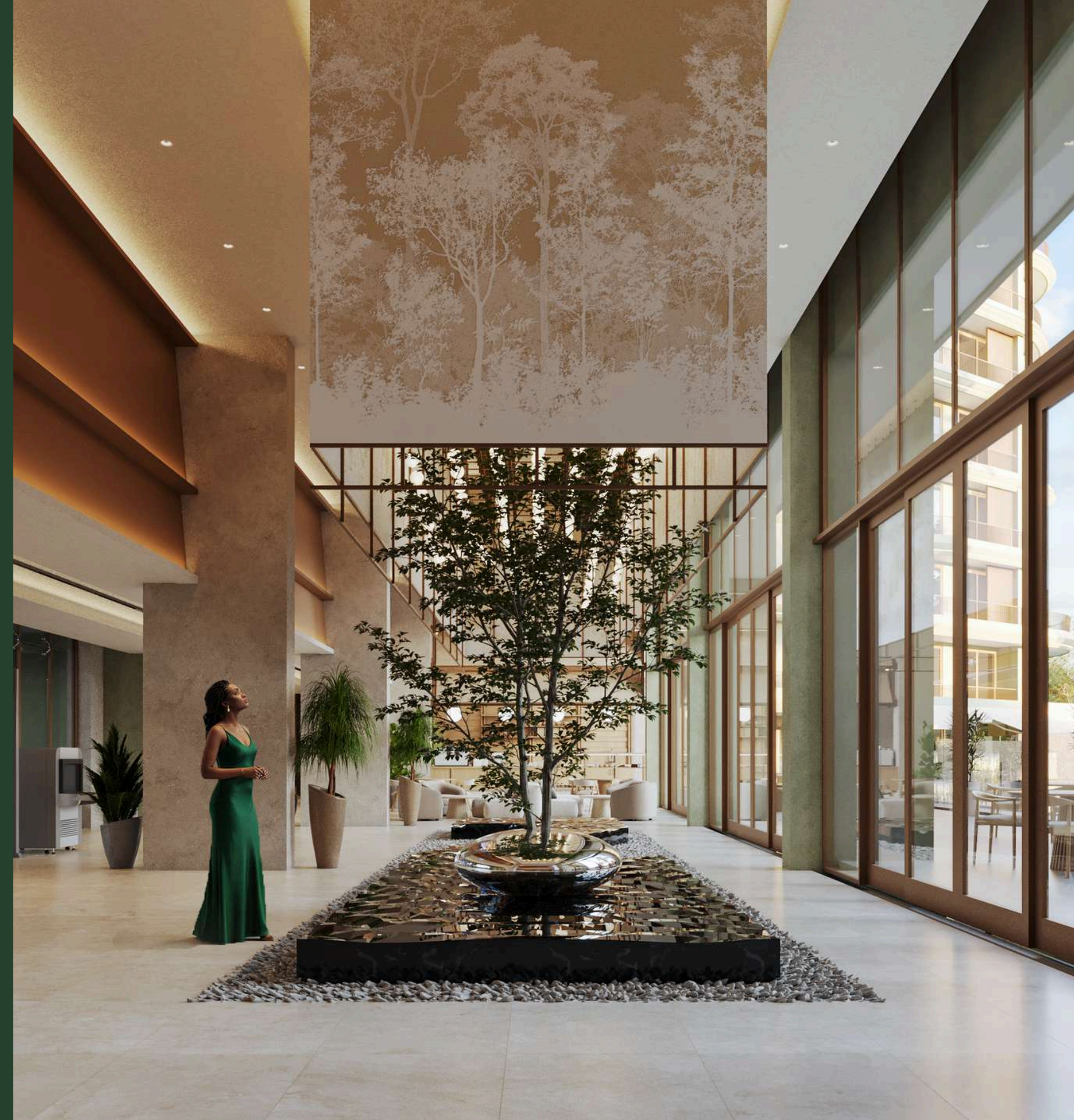
This is where life softens, awareness deepens, and you are invited to return, again and again, to your truest self.





THE ARRIVAL

Arrival at Silva is not just a moment, it is a transition. As you step in, the city begins to fall away. The space opens, light expands, and the rhythm shifts. A sense of calm that settles instantly. Movement slows. Sound softens. Presence deepens. This is not simply an entrance. It is the beginning of a different way of living. Where every arrival feels like coming home to something greater.





THE NEST

Perched among the treetops, The Nest is Silva's most iconic architectural moment. A sculptural pavilion suspended within the canopy, it offers a space for quiet reflection, intimate gatherings, and elevated views across the surrounding forest landscape. Here, architecture dissolves into nature. The Nest embodies Silva's philosophy, that the most memorable spaces are those that reconnect us to the natural world.



THE POOL

The pool at Silva is conceived as a quiet water sanctuary, set against uninterrupted views of the surrounding forest. Reflections of trees and sky move gently across the surface, creating a sense of depth, calm, and continuity. Morning swims unfold in soft light filtered through the canopy. More than a place to swim, it is a place to slow down, to breathe, to reset, and to feel completely immersed in nature.



THE RESTAURANT

The signature restaurant offers a refined yet relaxed dining experience within the Silva community. Overlooking landscaped surroundings, it becomes an effortless extension of everyday living. Supported by hospitality-led management, from morning coffee to evening conversations, every moment is designed to feel considered, intimate, and quietly elevated.



THE PUTTING GREEN

Framed by palms and soft greenery, it invites light-hearted games, unhurried conversations, and time spent outdoors in a setting that feels both refined and relaxed. Here, movement is gentle and the pace of the day naturally slows. Designed not for competition, but for connection to the space, to others, and to the simple pleasure of being present.



THE SPA

Set against the calm of Silva's botanical landscape, the spa is designed as a retreat within a retreat. A quiet dialogue between interior and nature. Treatment spaces open toward the gardens, allowing the outside to gently shape the experience within. Every element, from scent to sound to material, is curated to restore balance and presence. Here, time slows completely. And restoration becomes instinctive.



THE GYM

The gym is positioned to open fully toward the surrounding forest and botanical gardens where movement is guided not by intensity, but by rhythm. Equipped to international standards and designed with clarity and balance, this is a space where strength is built quietly and consistently. Not just a place to train, but a place to reset.

IN THE HEART OF THE BLUE ZONE

Silva sits within one of Nairobi's most prestigious and secure neighbourhoods. Gigiri's Blue Zone is home to the United Nations Office at Nairobi, diplomatic missions, international organisations, and global institutions. This rare positioning offers residents immediate access to international life, while preserving a sense of privacy and calm. Here, global influence meets quiet residential calm, creating an address defined by both prestige and peace.

SILVA

- ① Eaton Place
1 min walk
- ② Village Market
3 min walk
- ③ US Embassy
4 min drive
- ④ UN Headquarters
6 min drive
- ⑤ Karura Forest
6 min drive
- ⑥ Nyari Estate
10 min drive
- ⑦ Runda Estate
6 min drive
- ⑧ Central Business District
20 min drive
- ⑨ Westlands
20 min drive
- ⑩ The Airport (JKIA)
30 min drive



KARURA FOREST

CBD

WESTLANDS

GEM FOREST

KARURA FOREST

COMFORT GARDEN HOTEL

TRADEMARK HOTEL

VILLAGE MARKET

SILVA

EATON PLACE

TRIBE HOTEL

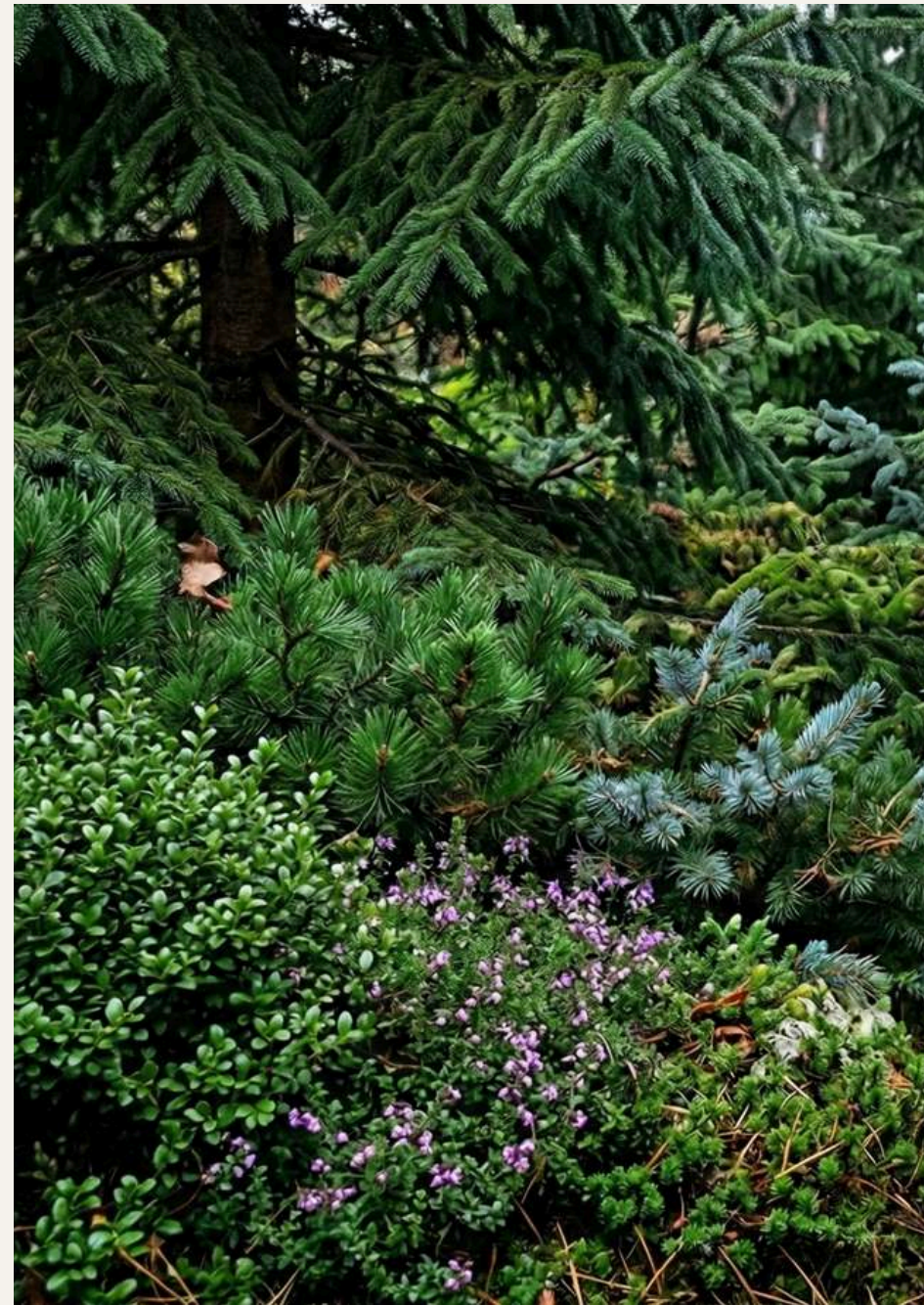
A LANDSCAPE COMPOSED OF THE 4 SEASONS

Silva's 4 seasons botanical garden is designed as a living journey through the seasons. Each zone evokes a distinct sensory experience, offering beauty, contrast, and connection throughout the year.



Winter

structured conifers, cool tones and contemplative



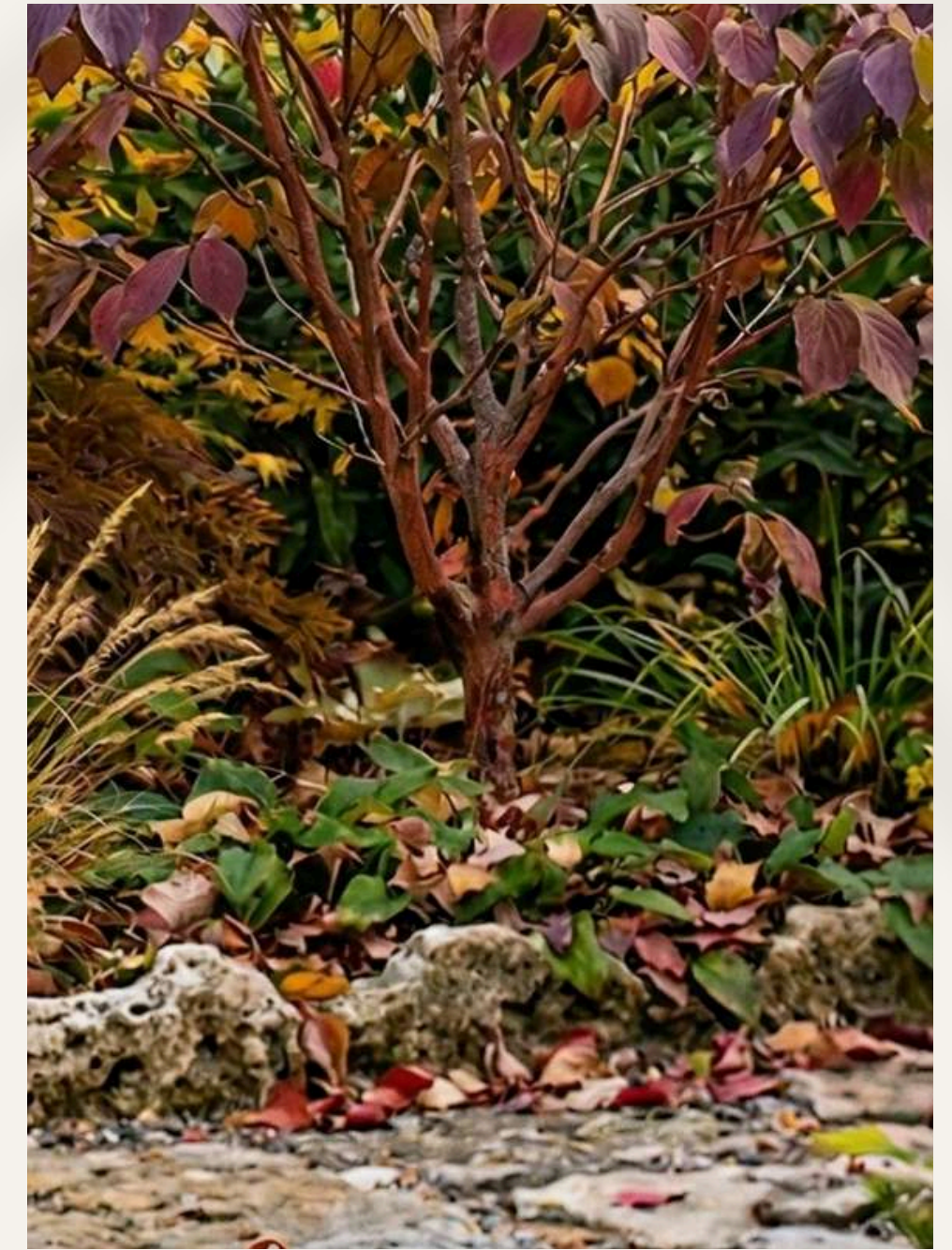
Spring

evergreen woodland, dense, immersive restorative



Summer

open lawns and palms, light-filled and expansive.



Autumn

layered planting with rich colour and texture



ELEGANCE

in a lower tone

Premium finishes are chosen the way one chooses words carefully, intentionally, with meaning. Soft textures. Natural materials. Spaces that breathe. Here, comfort is not added. It is designed. And serenity is not promised. It is felt. Supported by intelligent systems and thoughtful design, these are homes that adapt to you.

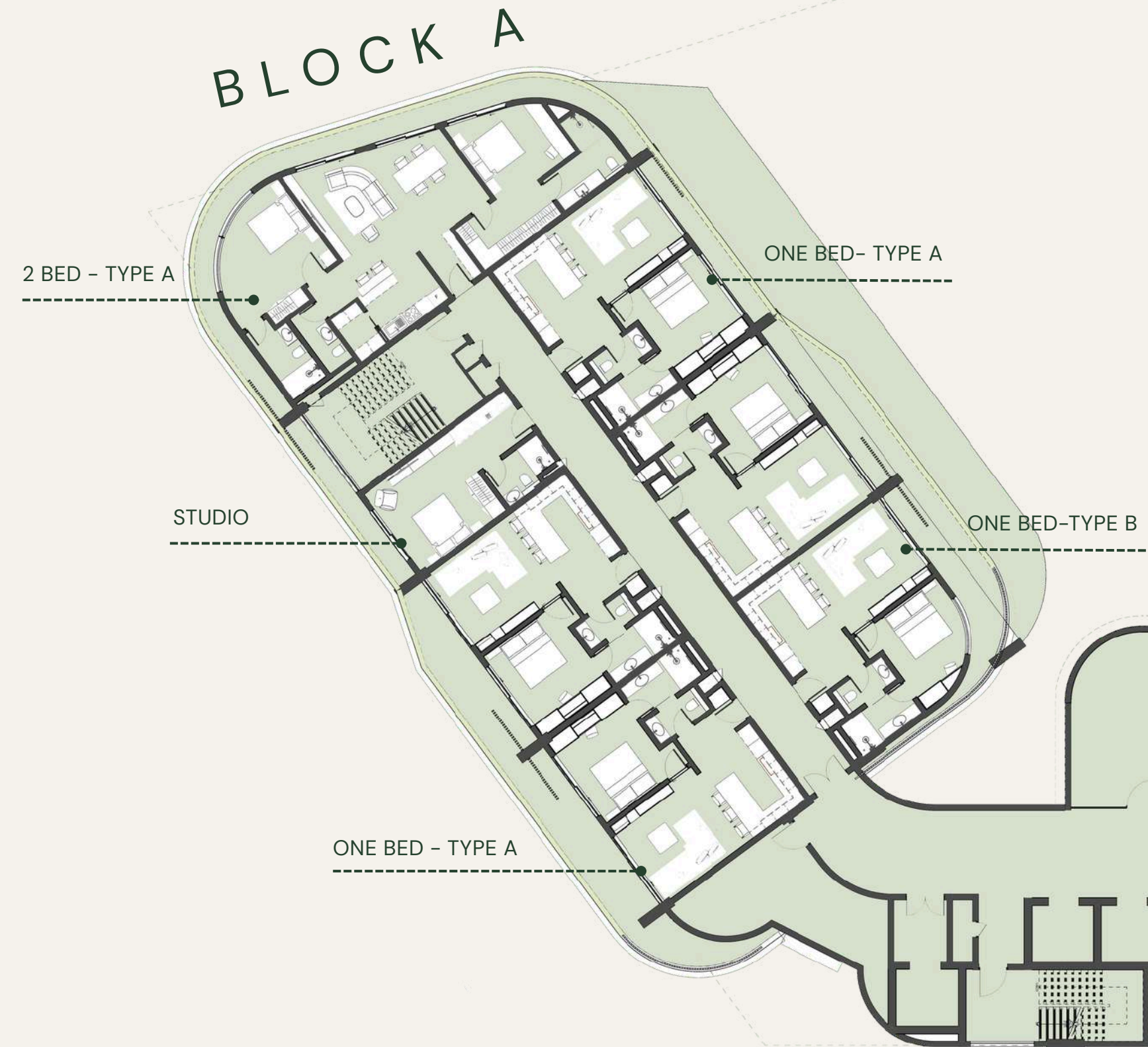


WHERE
COMFORT
BECOMES
INSTINCTIVE

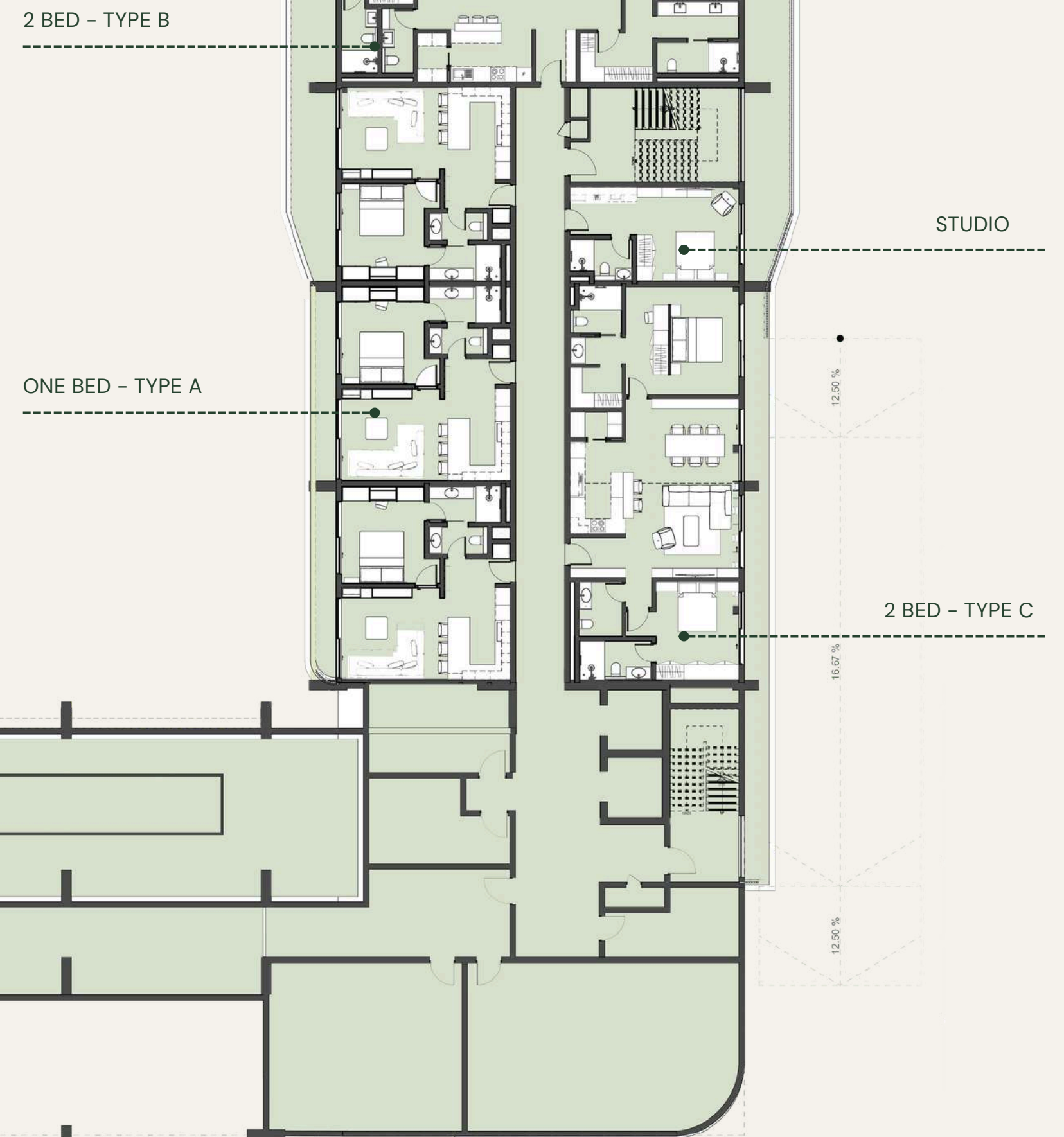


Every space within Silva is shaped to feel effortless, a natural extension of how you want to live. Light moves gently across surfaces. Materials feel intuitive to the touch. Proportions are balanced, calm, and considered. Nothing demands attention, yet everything feels right. These are interiors that do not overwhelm, they welcome. Spaces that do not impress loudly, they stay with you quietly. A home that feels familiar from the very first moment.

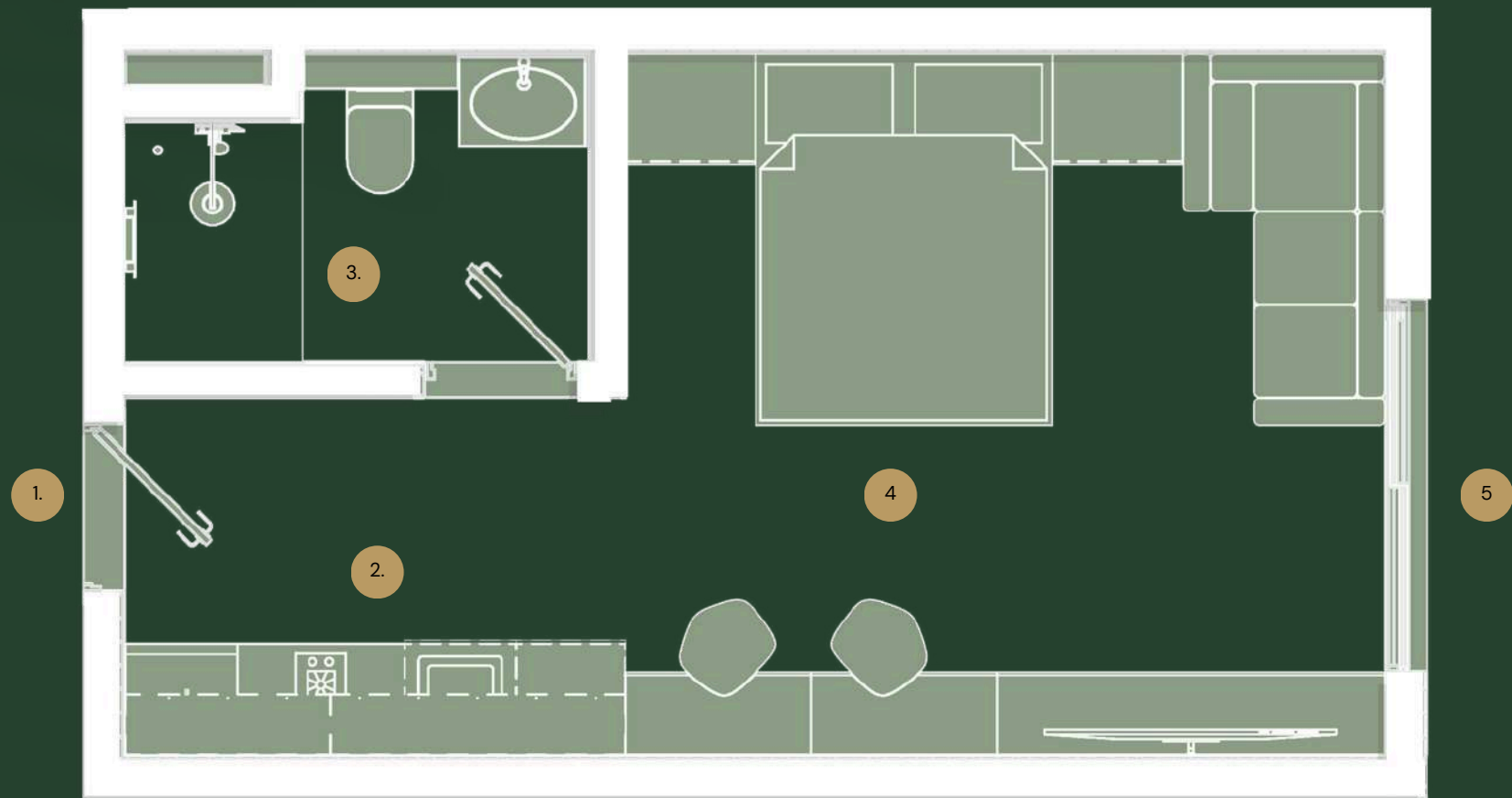
BLOCK PLAN



BLOCK C



STUDIO



- 1. Entry Foyer
- 2. Open Kitchen
- 3. Bathroom
- 4. Living/Bed Area
- 5. Balcony



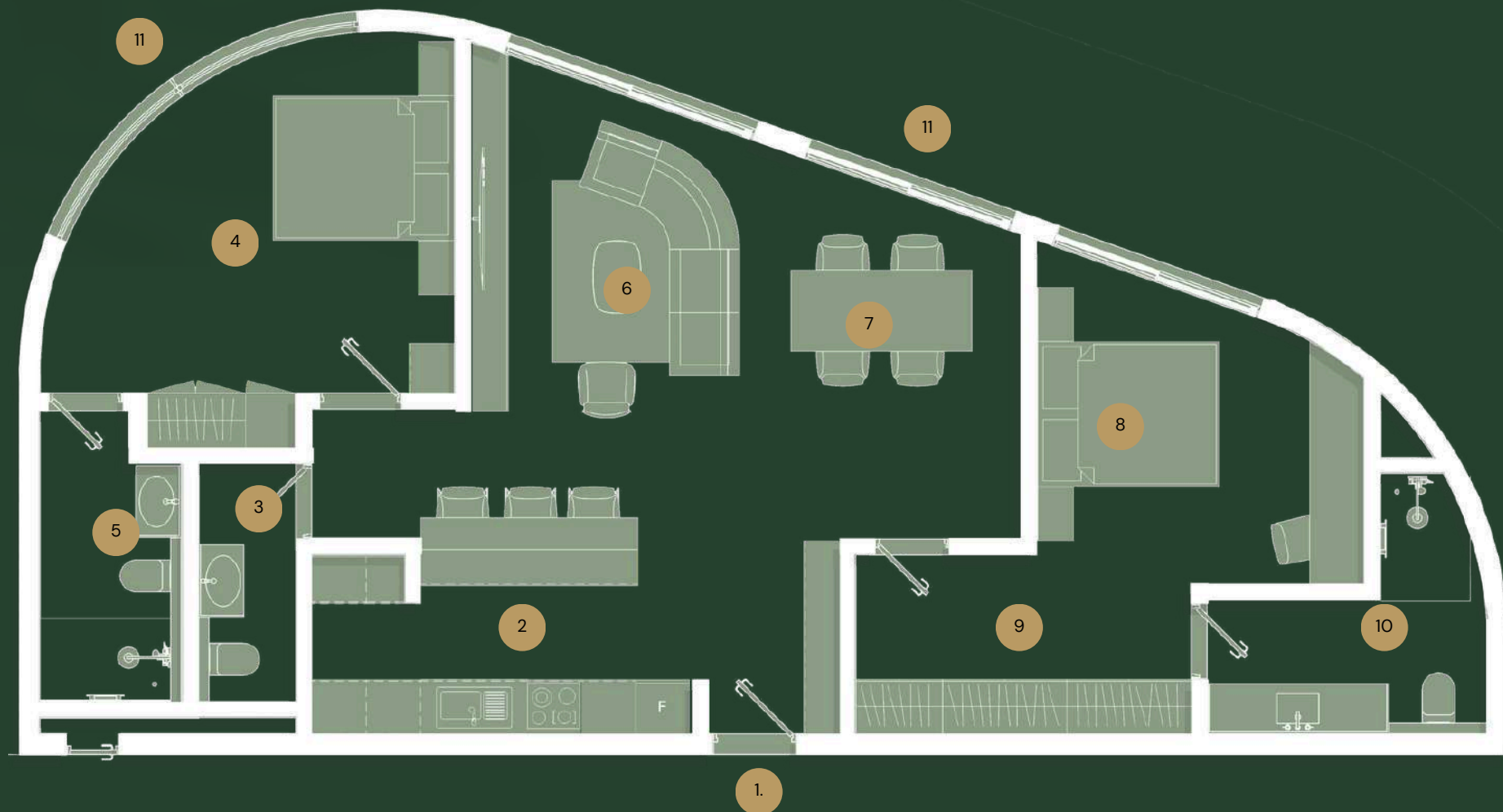
ONE BED



- 1. Entry Foyer
- 2. Open Kitchen
- 3. Cloakroom
- 4. Living Area
- 5. Bathroom
- 6. Ensuite Bath
- 7. Balcony



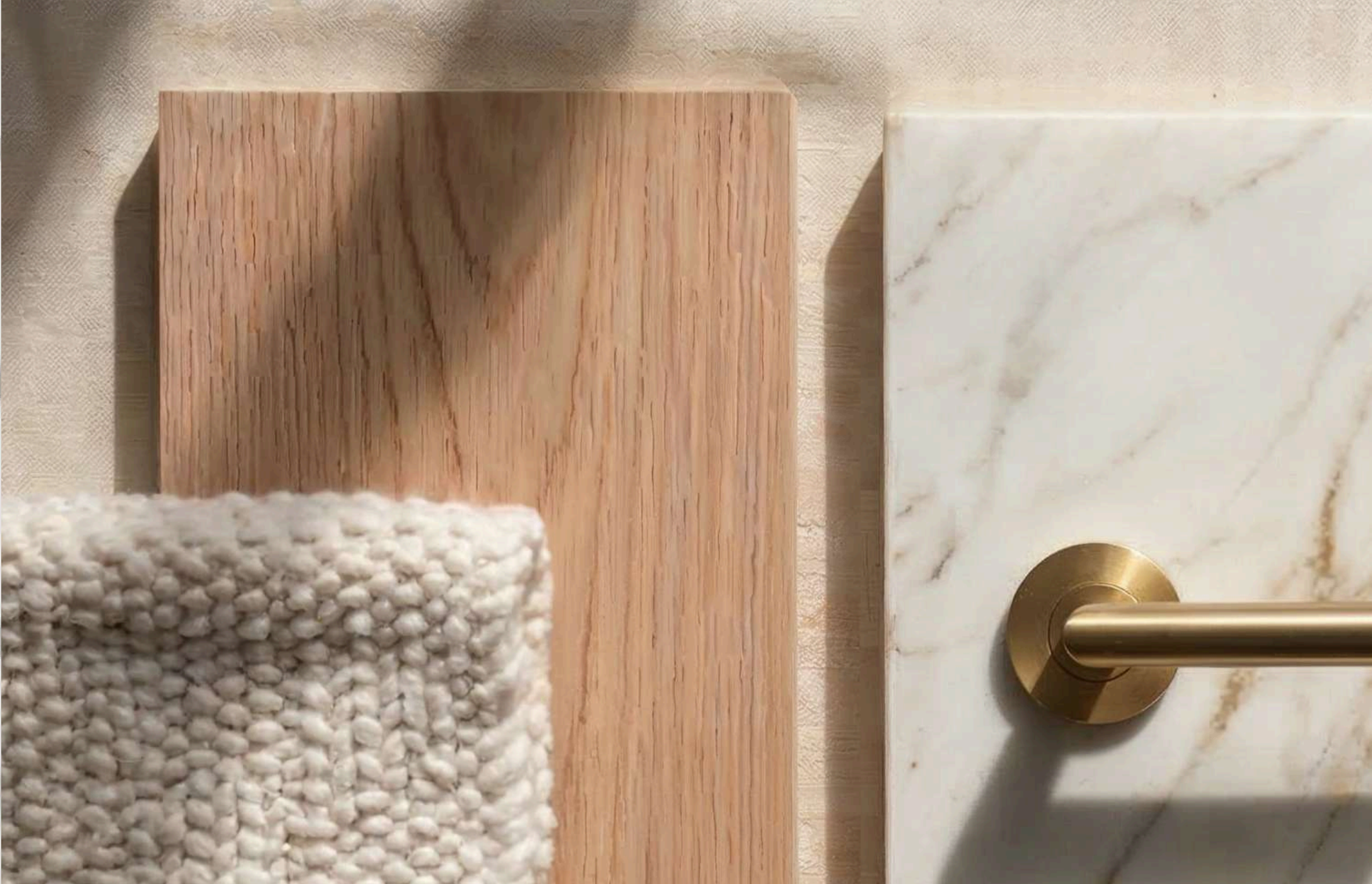
TWO BED



- | | | |
|-----------------|---------------------|---------------------|
| 1. Entry Foyer | 5. Ensuite Bathroom | 9. Master Walkin |
| 2. Open Kitchen | 6. Living Area | 10. Master Bathroom |
| 3. Cloakroom | 7. Dining Area | 11. Balcony |
| 4. Bedroom | 8. Master Bedroom | |

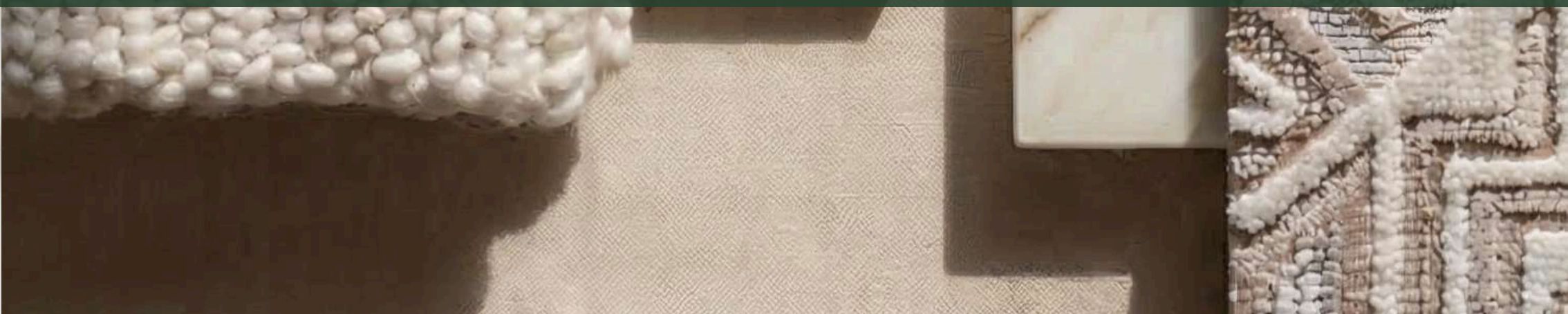
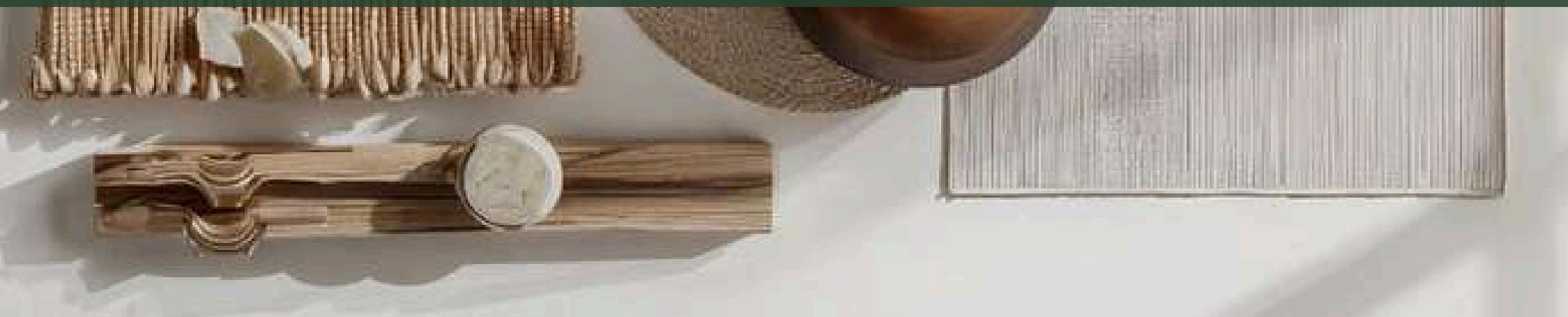






FINISHES REFINED TO THEIR ESSENCE

Every material at Silva is chosen with quiet intention not for display, but for how it feels, ages, and endures. A palette of natural oak, soft stone, and textured surfaces is layered with warmth and restraint. Finishes are tactile, grounded, and timeless. Light settles gently across each surface, revealing depth, texture, and subtle variation. Nothing is excessive. Nothing is accidental. These are interiors shaped through materiality, where every finish contributes to a sense of calm, balance, and lasting refinement.





SECURITY, WITHOUT COMPROMISE

In a setting defined by global institutions, diplomatic presence, and international standards, every element of safety has been carefully considered, layered, and integrated to meet the expectations of those who value discretion, protection, and peace of mind. Each residence is supported by intelligent, fully integrated systems designed to operate seamlessly in the background:

- Smart access control with keyless entry
- AI-enabled CCTV with 24/7 monitoring
- Automated sprinkler protection in every unit
- Advanced smoke and heat detection systems
- Secure, controlled building access points
- Centralised safety and response management
- High-speed, always-on connectivity

Technology that disappears into the background yet elevates every moment. Because true security is not something you think about, it is something you feel.

SUSTAINABILITY

Silva is designed with sustainability at its core. Targeting LEED certification, the development aligns with global environmental standards while supporting Kenya's Vision 2030 for sustainable urban growth. Through energy-efficient design, responsible material use, and environmentally conscious planning, Silva reflects a commitment to both present living and future responsibility. A development designed to endure, thoughtfully.





VALUE, DESIGNED TO ENDURE

Positioned within Gigiri's Blue Zone, Silva offers a rare investment opportunity:

- Premium positioning with stronger yields
- High demand from diplomats, expatriates & executives
- Higher occupancy, lower vacancy
- Professionally managed rental programs
- Faster resale & capital appreciation
- Stable, long-term income

An asset that performs quietly, but consistently.



ABOUT THE DEVELOPER

Silva Gigiri Limited is behind the Gigiri Lion Villas (GLV Collection) a portfolio of boutique luxury residences within Nairobi's diplomatic quarter.

Located steps from the United Nations and major embassies, the GLV developments have become a preferred address for diplomats, expatriates, and international executives.

With a proven track record in hospitality-led living, high occupancy performance, and global service standards, the developer brings deep expertise in creating environments that deliver both lifestyle and long-term value.

PROJECT TEAM (SILVA)

Developer: SILVA GIGIRI LTD

Design Architect: Torrens Studio

Landscape Architect: LDI Dezine

Interior Designer : Triplefive Design

Marketing Material : Triplefive Design

Visualisation: Vincent Kimani

FOR MORE DETAILS CONTACT BELOW

Phone Number: +254 115 200 200

Email: sales@silva.co.ke

Website: www.silva.co.ke

Address: UN Crescent Rd, Next to Eaton Place, Gigiri, Nairobi.